



# EPS

ENGINEERED PROTECTION  
SYSTEMS, INC.

Volume 4, Issue 2

Spring 2003

PLEASE ROUTE TO CHIEF OF SECURITY

## SUCCESS ON WHEELS

Meet Chris Weller, corporate secretary for Weller Truck Parts. Chris and his brothers, Skip, John and Paul have been running and expanding the auto and truck operations since 1984. Weller actually encompasses several businesses: *Weller Truck Parts*, *Weller Auto*, *Weller Repairables* and *Frontier Used Truck Parts*.

The businesses, which consist of ten locations serving Michigan, Northern Indiana and Northern Illinois, started in Muskegon, Michigan in 1928. The boys' grandfather, Harry Weller, a body shop owner, capitalized on the value of recycled parts. He purchased land to store and sell parts from damaged vehicles. The small business flourished.

In 1949 Harry moved the entire operation to Grand Rapids. At the time of the move Harry Weller II (Junior) was returning from military service in Alaska and went to work for his father. Junior purchased the business in 1960 and began expanding. In 1973 he opened Weller Truck Parts. Junior and his wife Dorothy were also busy raising four boys and introducing them to the truck and auto parts industry.

Today the four brothers proudly have grown Weller Truck Parts and Weller Auto into industry leaders. "It is a network of eight retail locations and two support sites spanning three states and employing over 300 people," says Chris. "It is a complete source for new, used and re-manufactured parts for cars, trucks and recreational vehicles." The next time you need great service and quality parts you can visit one of their locations or even shop on-line.

Looking to the future, we can see a fourth generation Weller leading and expanding the business. Harry Weller has 12 great grandchildren, six boys and six girls. Those old enough are working part-time and learning the business.

**EPS** is proud to provide security for Weller's facilities in Grand Rapids, Farmington and Kalamazoo, Michigan. We also secure their South Bend, Indiana location. Chris says that the security systems offer "piece of mind." He says that **EPS** has always been their choice for security because we are a local, family owned business like Weller and in Western Michigan, "the biggest and the best."

**EPS** salutes the Weller family for their commitment to quality, and we wish them continued success. For more information visit them at [www.wellertruckparts.com](http://www.wellertruckparts.com). Find out more about **EPS** at [www.epssecurity.com](http://www.epssecurity.com).

### COMMERCIAL

- CLOSED CIRCUIT TV
- CARD ACCESS SYSTEMS
- HEAT & SMOKE DETECTION
- FIRE SYSTEMS MONITORING
- INTRUSION DETECTION
- HOLDUP ALARMS
- SAFE & VAULT MONITORING
- POWER MONITORING
- INDUSTRIAL PROCESS MONITORING
- FURNACE & BOILER MONITORING
- GUARD TOUR MONITORING
- FIRE TESTING
- PREVENTATIVE MAINTENANCE
- MANDATED INSPECTIONS

### RESIDENTIAL

- HEAT & SMOKE DETECTION
- INTRUSION DETECTION
- FURNACE, SUMP PUMP, AND FREEZER FAILURE MONITORING
- EMERGENCY MEDICAL ALERT
- PANIC & CO ALARMS



CHRIS WELLER, CORPORATE SECRETARY

## ENGINEERED PROTECTION SYSTEMS, INC.

750 Front Street, N.W., Grand Rapids, MI 49504  
Phone: (616) 459-0281 Fax (616) 459-0553

1117 Carver Street, Traverse City, MI 49686  
Phone (231) 946-6590 Fax (231) 929-9099

610 W. Sheridan St., Suite 2 Petoskey, MI 49770  
Phone (231) 487-1868 Fax (231) 487-1870

2450 VanOmmen Dr., Suite A Holland, MI 49424  
Phone (616) 399-4760 Fax (616) 399-2934

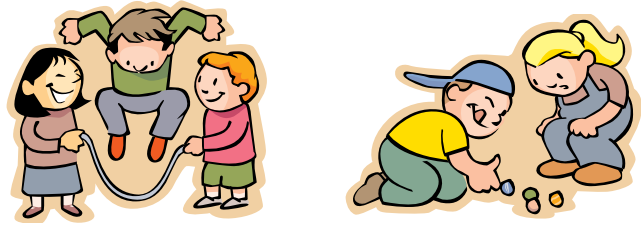
1999 Walden Dr., Suite #3 Gaylord, MI 49735  
Phone (989) 705-7878 Fax (989) 705-7879

1960 W. Houghton Lake Dr. Houghton Lake, MI 48651  
Phone (989) 366-7535 Fax (989) 366-0535

219 N. Westnedge Ave. Kalamazoo  
Phone (269) 388-9600 Fax (269) 388-9615

Email: [sales@epssecurity.com](mailto:sales@epssecurity.com)  
Web: [www.epssecurity.com](http://www.epssecurity.com)

Since 1955



## CHILD SAFETY

While it is important to tell children not to talk to strangers and never get into a car with someone they don't know, it is also very important to tell them what to do if they are lost. If they get separated from a parent or caregiver they will be forced to talk to a stranger, so point out which "strangers" they CAN speak to. Obviously a police or fire officer is the best choice, but your child may not be able to locate one. It is suggested that you instruct them to talk to a UPS or FedEx drivers, mail carriers, construction workers, **EPS** service people, and to a cashier at a mall or store. They should ask the person they approach to contact their parents or guardian and wait in the public place to be picked up. A piece of paper, tucked inside a coat or jacket, with your emergency contact information on it would help.

## We are growing - Again !

More than three years of negotiations has resulted in the largest purchase of another security company in **EPS** history. As of March 1, 2003, **EPS** has acquired Kalamazoo Security Systems, Inc. They have been a residential and commercial security provider in Southwestern Michigan since 1972. We are pleased that Don Zylstra, owner of Kalamazoo Security, selected **EPS** as the company he trusted to care for his customers and employees.

"Kalamazoo Security's sound reputation and dedication to customer service fits well with our philosophy," said Allan Carlson, owner of **EPS**. "We are committed to maintaining the quality service their customers have always received." Kalamazoo Security's current headquarters will serve as an **EPS** branch office, with the majority of current staff remaining.

This purchase means an additional 3,000 customers to **EPS**. Adding this to our existing customer base of 10,000 strengthens our position as the largest, privately owned security provider on the west side of the state. "Michigan is feeling our presence," says Jim Zweedyk, vice-president of growth and development for **EPS**. "This acquisition gives us an office with an experienced staff and certified technicians. This will allow us to better care for our customers in Southwest Michigan." **EPS** will now have 150+ employees and over 75 service and installation vehicles on the road.

**EPS** was established in Grand Rapids in 1955. It wasn't until Allan Carlson purchased the company in 1970 that "growth through acquisition" became a strategy. Our first acquisition came in 1972 with the purchase of Commercial Security and Investors. Two more acquisitions followed, strengthening our presence in West Michigan.

In order to more effectively reach Northern Michigan we purchased Universal Alarm Systems of Traverse City in 1983. We still use Universal's location as our branch office today. Since 1983 **EPS** has purchased five Northern Michigan security companies resulting in three additional branch offices in Petoskey, Gaylord and Houghton Lake.

Kalamazoo Security is fourteenth acquisition to date, and second in the Kalamazoo area, solidifying our presence in Southwestern Michigan. Although we have grown significantly since 1970 we have proudly remained a family owned, service orientated company that is one of the top 30 security providers in the United States.